

CONFIGURING TEMPORARY INTERNET FILES AND HISTORY SETTINGS INTERNET EXPLORER ONLY

Step 1 Open Control Panel from your Start menu

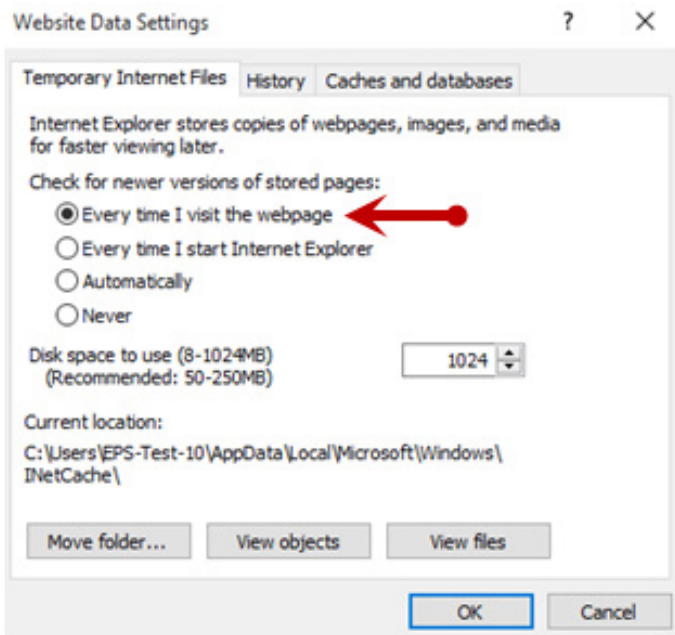
- Select Internet Options
 - *NOTE: You may need to select Network and Internet and then Internet Options

Step 2 From Internet Options, select General, and then Settings

- On the Temporary Internet Files page, check Every time I visit the webpage

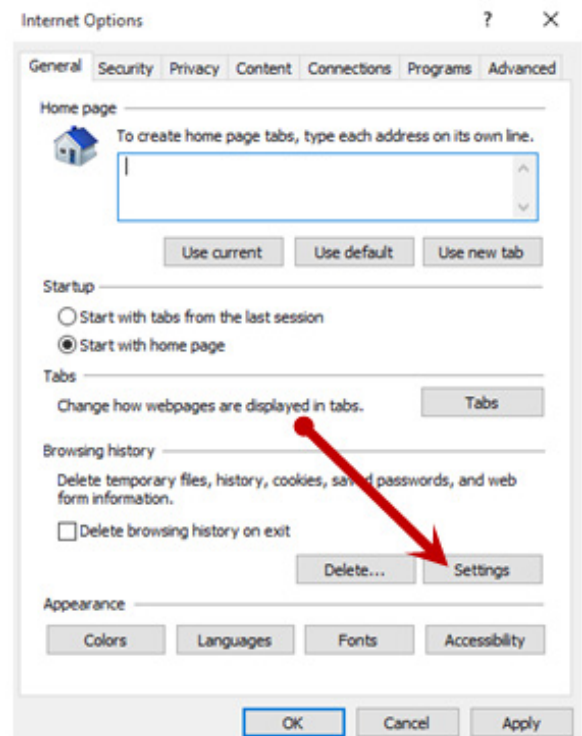
Step 3 From Internet Options, select General, and then Settings

- On the Temporary Internet Files page, check "Every time I visit the webpage"



Step 3

Step 4 Click OK the next 2 windows



Step 2



INSTALLING DEVICE CONTROL

If you are accessing the Remote Deposit application for the first time, you will need to install Device Control, a feature used to manage your scanner(s). Device Control will need to be installed before you can begin making deposits.

***NOTE:** If you are having issues installing Device Control or your scanner, please call 877-542-2244

Step 1 Navigate to your financial institution's application

- Fill in the User Name, Password, and Company fields
- Click Login

Step 2 Select Transactions from the left main menu

- From there, under Check Processing, click "Remote Deposit Complete". The Open Deposits page will appear.

Step 3 Select Create New Deposit

- The Device Control prompt appears, informing you that Device Control is attempting to launch. Select Run to continue.
- For Google Chrome users, click on the ProfitStarsDeviceCon....exe

Step 4 The system will prompt you to begin installing Device Control. Click Install to continue. This may take several minutes.

- A prompt appears to ensure that a user with Administrator rights to the computer will proceed with the installation. Click OK to continue.
- A prompt may appear for the application to make additional changes. Select Yes to continue.

INSTALLING YOUR SCANNER

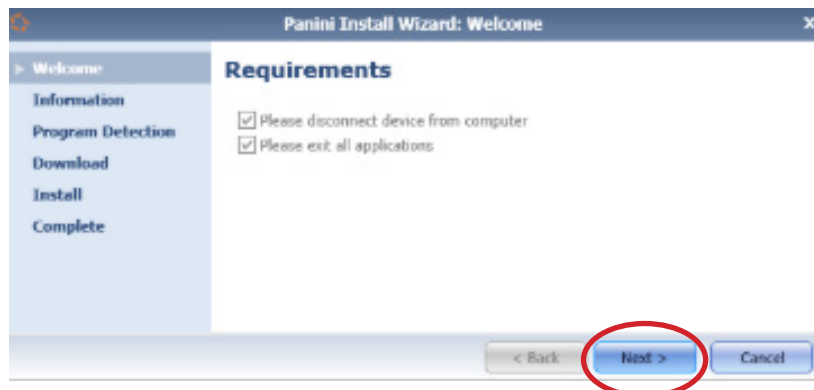
Step 1 Choose the scanner and model you wish to install, and then select Install.

Step 2 The Add/Remove Devices window appears. Choose the scanner you wish to add, and then click Install.



Step 3 The Install Wizard appears. Disconnect the scanner's USB or power cable from your computer, and exit all other applications. Click Next in the Install Wizard to continue.

- The Install Wizard displays the Installer Information prompt. Choose Next to continue.
- The Install Wizard displays the Install Ready prompt. Select Next to continue.
- The Install Wizard displays the Install Done prompt. Click Next to continue.



Step 4 After the Install Wizard has completed, connect the scanner to your computer, and then click Finish. The scanner is now installed.

***NOTE:** When you begin making deposits, ensure that the Scanner Terminal # field is populated on the Create New Deposit page. When this field is populated, you are ready to begin scanning checks.